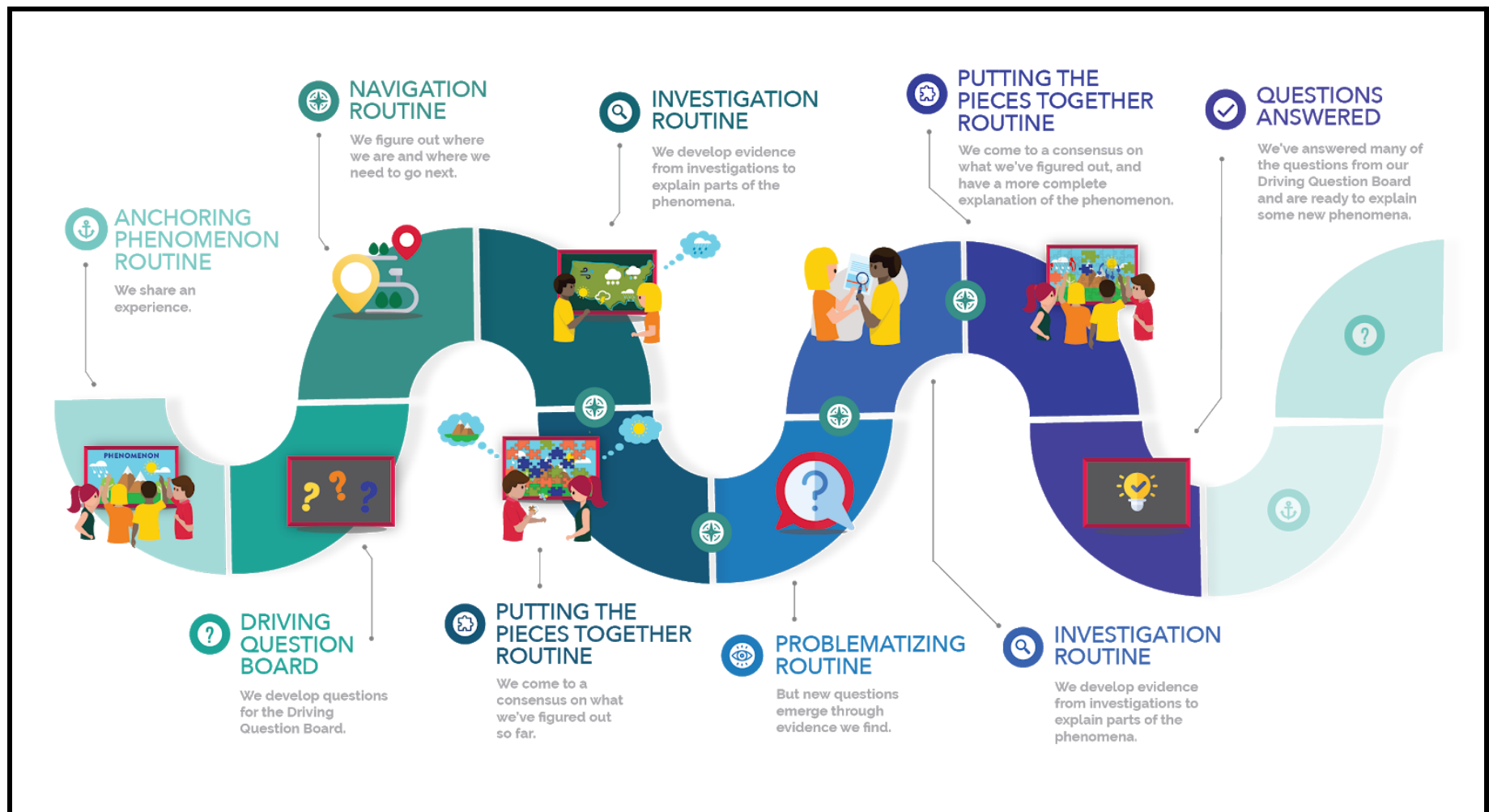


# Storyline Instructional Model and PD Reflection

Each step is driven by students' questions that arise from phenomena.



PD Questions	What have you figured out?	What do you wonder? What questions do you still have?
Day 1: What does it mean to use phenomena and questioning to support student sensemaking?		
Day 2: How do we support instruction that is coherent for students?		
Day 3: How can we support students in sensemaking discussion?		
Day 4: How do we support and assess students' growth in 3 dimensional learning?		